

COUNTRY REPORT: MALAYSIA



Dr. Ina Md Yasin
Principal Fellow at the Graduate School of Business
Universiti Kebangsaan Malaysia

LOCATION



- ❑ Malaysia is a federal state located in Southeast Asia
- ❑ Consisting of 2 regions separated by the South China Sea, West Malaysia (bordered by Thailand in the North and Singapore in the South) and East Malaysia (the northern part of Borneo Island, which is bordered by Indonesia in the South and Brunei in the North)
- ❑ Located close to the Equatorial line, Latitude 1° and 7° North and Longitudes 100° and 119° East
Malaysia covers an area of 329, 960.22 km²

(Source: Malaysia Information:

Location <https://www.malaysia.gov.my/portal/content/142>

Retrieved 4 July 2023)

MALAYSIA AT A GLANCE

A tropical, Muslim-majority country in Southeast Asia where its citizens live-in multi-racial and multi-religious harmony



The New Straits Times
Food brings us together

By [LIEW YIT WEY](#) - August 28, 2019, @ 11:58 pm

A hearty breakfast to start the day and strengthen friendship. PIC BY FAIZ ANUAR

- ❑ Comprising 13 States and 3 federal territories (Kuala Lumpur, Labuan & Putrajaya)
- ❑ Governed directly by the Federal Government of Malaysia
- ❑ Kuala Lumpur is the national capital of Malaysia, Putrajaya is the administrative capital, and Labuan is an offshore international financial centre.



Kuala Lumpur



Putrajaya



Labuan

HEADED BY THE ONLY ELECTED CONSTITUTIONAL MONARCH IN THE WORLD

Nine of the states in Peninsular Malaysia are under the rule of Malay Kings (Sultans). The Government of the Constitutional Monarch is led by His Majesty the Yang di-Pertuan Agong, who is selected every five years from among the nine Malay Monarchs



HIS MAJESTY
SERI PADUKA BAGINDA THE YANG DI-PERTUAN AGONG
AL-SULTAN ABDULLAH RI'AYATUDDIN AL-MUSTAFA BILLAH SHAH
IBNI ALMARHUM SULTAN HAJI AHMAD SHAH AL-MUSTA'IN BILLAH

PARLIAMENTARY DEMOCRATIC SYSTEM

- ❑ maintained by the Council of Ministers led by the Prime Minister
- ❑ General elections are held every five years
- ❑ The current ruling party is a mixed party consisting of several political parties representing various ethnic groups



YAB Dato' Seri Anwar Bin Ibrahim
The 10th Prime Minister of Malaysia

RELIGION

Constitution

Article 3:

Islam is the religion of the Federation, but other religions can also be practised safely and peacefully in any part of the Federation

Article 11:

Every person is entitled to profess and practise his own religion and subject to Clause (4), to propagate it

Meaning:

Even if Malaysia has declared Islam as the official religion, the Malaysian population which consists of various ancestry and beliefs, are free to practise their respective faith. This freedom shapes a strong unity between the races and this is proven by the peaceful environment achieved by Malaysians.

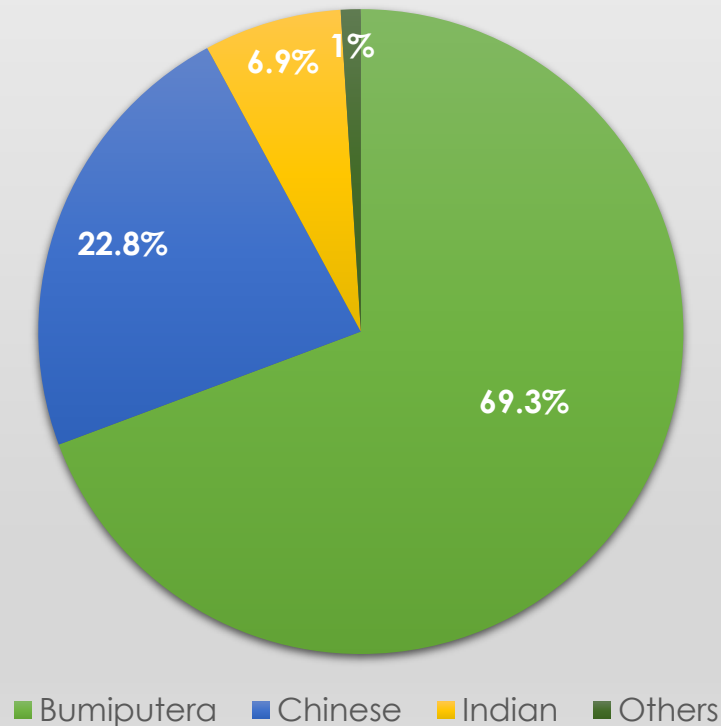
Source: Malaysia 2016 (Department of Information)



POPULATION

The Distribution of Population

(Department of Statistics Malaysia, 2019)



- 3 Major ethnic groups (The Bumiputera (i.e., Malays and indigenous peoples), Chinese and Indian)
- The Malays are the predominant group among the Bumiputera and are mostly found in Peninsular Malaysia
- Indigenous peoples are the natives of Peninsular Malaysia and is generally divided into three major groups, namely the Negrito, Senoi and Proto-Malay
- Sabah's population consists of 32 ethnic groups and the major ethnic is Kadazandusun while Sarawak's population consists of 27 ethnic groups and Iban is the major ethnic group

Source: Malaysia 2016 (Department of Information)

ECONOMY

Latest Economic & Fiscal Outlook and
Revenue Forecasts for 2023

Budget 2023: Towards Malaysia Madani by Ministry of Finance, Malaysia

<https://budget.mof.gov.my/ms/bajet2023/fiskal/>

MALAYSIA: PERANGKAAN PENTING DAN UNJURAN

MALAYSIA: KEY DATA AND FORECAST

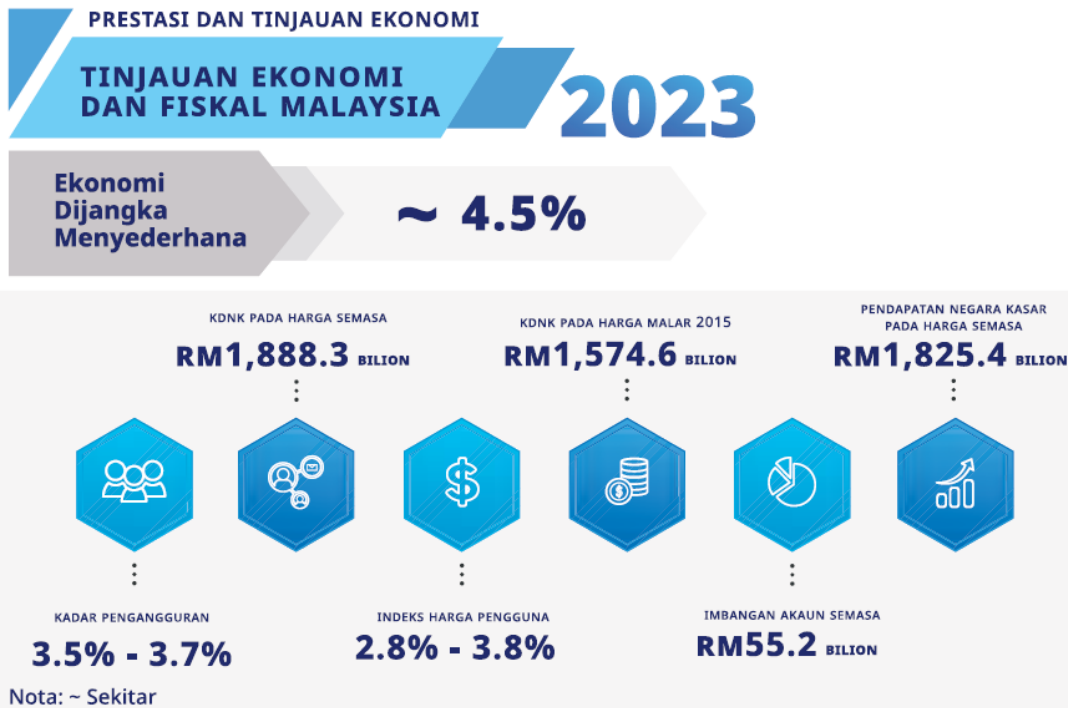
	2021		2022 ⁸		2023 ¹⁰	
PENDUDUK (juta) ¹ POPULATION (million) ¹	32.6		32.7		33.1	
PENGELUARAN DALAM NEGERI DOMESTIC PRODUCTION	RM juta <i>RM million</i>	% perubahan <i>% change</i>	RM juta <i>RM million</i>	% perubahan <i>% change</i>	RM juta <i>RM million</i>	% perubahan <i>% change</i>
Keluaran Dalam Negeri Kasar (harga malar 2015) Gross Domestic Product (constant 2015 prices)	1,386,738	3.1	1,507,306	8.7	1,574,632	~ 4.5 ¹¹
Pertanian <i>Agriculture</i>	98,898	-0.2	98,949	0.1	100,076	1.1
Perlombongan dan pengkuarian <i>Mining and quarrying</i>	93,150	0.3	96,350	3.4	97,546	1.2

Keluaran Dalam Negeri Kasar (harga semasa) <i>Gross Domestic Product</i> (current prices)	1,545,372	9.0	1,788,183	15.7	1,888,284	~ 5.6¹²
Perbelanjaan penggunaan akhir: Awam <i>Final consumption expenditure : Public</i>	196,472	6.0	207,246	5.5	211,081	1.9
Swasta <i>Private</i>	894,881	3.7	1,029,952	15.1	1,124,256	9.2
Pembentukan modal tetap kasar: Awam ² <i>Gross fixed capital formation : Public²</i>	66,997	-10.0	72,193	7.8	78,952	9.4
Swasta <i>Private</i>	231,149	4.0	253,773	9.8	274,614	8.2
Perubahan inventori dan barangan berharga <i>Changes in inventories and valuables</i>	46,028	—	101,150	—	55,472	—
Eksport barangan dan perkhidmatan <i>Exports of goods and services</i>	1,063,817	21.8	1,320,329	24.1	1,438,458	8.9
Import barangan dan perkhidmatan <i>Imports of goods and services</i>	953,972	21.8	1,196,459	25.4	1,294,548	8.2

MALAYSIA: KEY DATA AND FORECAST (cont'd)

	2021		2022		2023 ¹⁰	
HARGA PRICES	Indeks Index	% perubahan % change	Indeks Index	% perubahan % change	Indeks Index	% perubahan % change
Indeks Harga Pengguna (2010 = 100) <i>Consumer Price Index (2010 = 100)</i>	123.1	2.5	127.2	3.3	–	2.8 - 3.8
Indeks Harga Pengeluar: Pengeluaran Tempatan (2010 = 100) <i>Producer Price Index: Local Production (2010 = 100)</i>	112.1	9.5	120.8	7.8	–	–
TENAGA BURUH LABOUR FORCE	Ribu Thousands	% perubahan % change	Ribu Thousands	% perubahan % change	Ribu Thousands	% perubahan % change
Tenaga buruh <i>Labour force</i>	15,797.2	0.8	15,933.1 ⁹	0.9 ⁹	16,140.2	1.3
Pengangguran ⁶ <i>Unemployment⁶</i>	733.0	(4.6)	629.3 ⁹	(3.8 - 4.0) ⁹	576.3	(3.5 - 3.7)

SUMMARY



- ❑ The economy is expected to moderate around 4.5%
- ❑ The GDP is RM1888.3 billion at current prices.
- ❑ The 2015 GDP at constant prices was RM1574.6 billion
- ❑ The current value of the gross national income is RM1825.4 billion
- ❑ The unemployment rate ranges from 3.5% - 3.7%
- ❑ The consumer price index ranges from 2.8 % - 3.8%

CONCLUSION

Malaysia performed better than projected in 2022, thanks to robust local demand and improved export performance post-Covid-19



Economic growth has recovered to pre-crisis levels of 8.7%



THANK YOU



eyna@ukm.edu.my